



**Bethel
Lutheran
Church**

Making Disciples!

August 20—September 3, 2020

E-Memo To the Saints

† Board of Elders

If you're in the hospital...

PLEASE contact the church office, or one of the pastors directly, if you are in the hospital or know a member who is. Despite very limited visitation, we want to reach out to and care for you during these times. Thank you!

Starting Sept. 5 Bethel's Saturday worship service will start at 4PM and Bible Class at 5PM.

Individual Holy Communion

Sign-up

On Sept. 6th from 1-3pm, we will offer Holy Communion to individuals or households that would like to sign-up for a 10-minute slot. This is intended for those who have not been able to comfortably come receive the Lord's Supper during our regular worship time. This will take place under the porte-cochere at church ONE family at a time. If you are interested, please contact Pastor Eden by phone or at PastorTim@blcbcs.org and he will sign you up for the next available time, or answer any questions you have.



FIT FOR CHRIST (FFC)

We are 8 years strong at Bethel's exercise group Fit For Christ (FFC) and ready to get back to our classes.

Join us Thursday 8/20/20 at 8:15 to meet and greet new ladies who want a light workout of the heart, mind and soul.

WHAT: Fit For Christ is an exercise class for any age. We incorporate 15 to 30 minutes of walking then 30 minutes of light, low impact exercise and finish with a five minute devotion.

WHEN: Tuesday and Thursday mornings at 8:15 meet & greet, class starts at 8:30. Come when you are able, no sign up required.

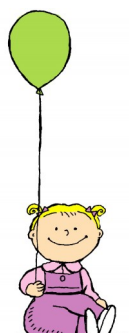
WHERE: Bethel 2nd floor classrooms

WHO: Anyone wanting to incorporate physical activities with encouraging ladies of all ages. Come see what we are up to.

BRING IF YOU HAVE: Floor mat or towel, pair of weights (3 and 5lb sets are the most used, we share what we have), water and mask. Wear gym clothes and walking shoes.

Child Care is available.

QUESTIONS: Lori Pfeiffer,
accuplandesignbcs@gmail.com



Child
Care
Available



Lutheran Women in Mission

September Bible Study

September 7th at 7:00 pm via Zoom

Bible Study Topic: "Go Ahead, Jump!"

All ladies of Bethel and their guests are invited to join.

Join Zoom Meeting

<https://us02web.zoom.us/j/89226426512>

Meeting ID: 892 2642 6512

One tap mobile

+1 346 248 7799, 89226426512# US (Houston)

Dial by your location

+1 346 248 7799 US (Houston)

Meeting ID: 892 2642 6512

Find your local number: <https://us02web.zoom.us/j/kOWaODtJb>

LWML Mite Collections

Please keep collecting Mites and we'll arrange a way to get them collected, safely in the near future.



Coming Up In September

On Sept. 6th, We will open up our facilities for Children Sunday School and Adult Bible Classes.

Please know that the Board of Parish Education will be meeting on August 31st to review policies and the impact of opening on our congregation. We presently are recruiting volunteers who would like to assist with our Sunday School program. If you would like a position that isn't being a teacher or aide we have a role for you. We are still seeking some people to help with inventory and supply requests. If you are interested in helping with your Sunday School please contact DCE Jeff or Connie. dcejeff@blcbcs.org or connie@blcbcs.org.

The Blessing of Books to go out to our students will happen in service on Sunday August 23rd. If you have a child who is to receive one of those books please pick it up on Sunday August 23rd. If you are unable to get the book on that day you may pick them up in the narthex. In addition if you would like the book for your child and are presently worshipping online please contact DCE Jeff and we will work something out in order that your child receives their book.

Senior High Youth

The Senior High Youth class has started to meet on Sunday mornings. If you are able and willing Dr. Klose and Mrs. Silber would love to see you there. We will continue to provide an online option for Sunday School. If you need meeting information to join online please contact DCE Jeff.



On Sept. 8th, We will start up the Tuesday Ladies Bible Study at 10AM in Room 232, studying the book of John, led by Pastor Bard. Child Care is Provided. This class will also be Live Streamed on our website—www.blcbcs.org.

Youth Confirmation

We will begin Youth Confirmation on Wednesday, September 9th.

• **Parent meeting with Pastor Bard is scheduled for Sunday, August 30th** immediately after our 11:15 service [about 12:30 pm]. At that meeting we will discuss general procedures, specific study topics which are upcoming, and a new YC strategy to better assist our children in learning their faith. Bethel's Confirmation starts with 5th Grade. If you have a child in this age group or older and you want to find out more about it, come to this meeting. Or Email Pastor Bard at pastorrandy@blcbcs.org

NO Fun Family Wednesday for Children... at this point. The decision has been made to forgo Children's Fun Family Wednesday. The Board of Parish Education will continue to review the opening of this program. However, at this time it will remain closed.

Devo and Games September 18th

We will continue to meet online for Devo and Games. The Browns will be hosting a quiz game on Friday September 18th. We will begin at 7:00 p.m. Please contact DCE Jeff to get the zoom information.



ONSITE WORSHIP AT BETHEL - In August,

The Lord's Supper will be served on the 1st, 3rd, & 5th Sundays.

We Continue to Worship here at Bethel Onsite:

Saturdays at 5:00pm.

Sundays at 8:30pm and 11:15am

Also offering Live streamed Sunday services.



AUGUST—Sunday School & Adult Bible Class

Throughout August we will continue to offer online Adult Bible Class found on our website www.blcbcs.org/streaming. Pastor Bard will be leading our Class on the Ten Commandments.

Our Children's Sunday School is still on our website with Mrs. Amanda and Mrs. Connie.

Our Youth, Junior High, and 5th & 6th Grade will continue to meet via zoom during the normal Sunday School hour 10am-11am on Sunday. To access any of the zoom Bible Studies please contact DCE Jeff.

DEAR BETHEL MEMBERS,

AS We start another year of Preschool in Bethel's facilities, due to COVID regulations, we ask that church members do not enter the church through the preschool doors during the school day (M-F, 7:15-5:30) or leave through that hallway. We need to limit that area for preschool staff and children only as much as possible. When entering the church building, please use the doors by the church office. If you must come into the preschool hallway/parish hall/church kitchen during the day, wearing a face mask is required.

Thank you for your help and co-operation! Hopefully, things will be back to "normal" soon and we may use the building as we have in the past.

Employment Opportunity Here at Bethel

Bethel is seeking candidates for the position of "Facility Manager." Responsibilities include general maintenance and repair, painting, limited janitorial duties, irrigation & HVAC scheduling, plus some landscaping, etc. Successful candidate must be a self-starter, organized and able to manage multiple areas successfully. Reliable transportation and excellent communication skills are a must. Position is currently part-time, but with the right skill set and work ethic, can move to fulltime. Schedule is flexible. Candidates may mail or bring a resume to Bethel hours before September 1st. Questions may be directed to Head Trustee Matt Hannes at mhannes@outlook.com

Bethel's facilities are slowly opening up. So, we need to remind everyone to Please use the Facilities Request Form on Bethel's website to request a meeting onsite. Boards and Bethel Groups wanting to start meeting onsite again will also need to use this form. Room assignments for these monthly meetings will be done by Facilities Manager, Nic Duncan, and will allow for social distancing requirements. The Trustees will review any member requests for personal use and will decide on a case by case basis whether or not the event will be allowed. **Nursery Care will now be available.**

When we all use this form, it allows the staff to make sure the air is on; the room is disinfected and set up with tables for your use; that there are no other groups planning to use it; that you have AV equipment if needed; and that it gets properly put on the church calendar. The church calendar is found on Bethel's website, and can be seen by everyone. Therefore, we try to keep it as current as possible. Thank you all for your attention to these matters.

Special Offering to be received on Reformation Weekend October 24/25

As we approach a decade of residing at our Boonville location, I have often been reminded that we have yet to complete our construction. What remains might be missed by the casual observer, but there are still several important things which we need to complete.

Because of this our Church Council recently approved a special offering for this fall to receive funds to provide seating for the balcony and for audio visual equipment which we still need. Estimates to provide adequate balcony seating is about \$100,000, but we have about half of this amount from previous gifts. Our A/V team estimates we need about \$16,000 for A/V equipment. My hope is that, with the monies raised at the end of October, we will have our new seating in place by Easter [Lord willing!]

We have announced this special offering early, so as to allow each family to set aside what they might give as the day approaches.

Pr. Bard

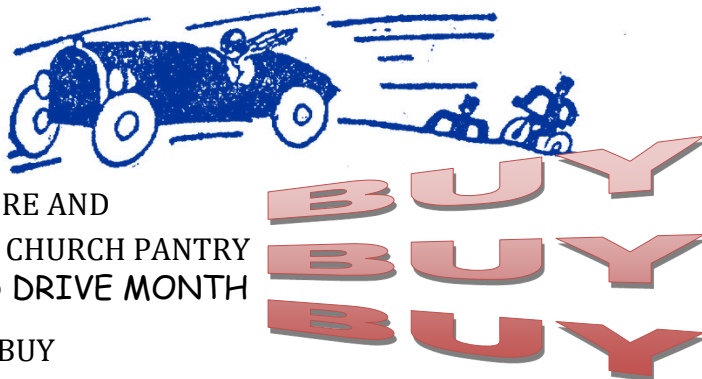


Bethel's Church Nursery is Open!

Bethel's Board of Parish Education has opened the nursery. This is being done with health and safety in mind for workers and children. We check in/out your child from the nursery. We also screen children and workers. More details will be present for those checking in your children at the nursery. If you have specific questions you may contact DCE Jeff.



NOO OOM
NOO OOM
NOO OOM



TO THE GROCERY STORE AND
BUY BUY BUY FOR THE BRAZOS CHURCH PANTRY
AUGUST IS BETHEL'S FOOD DRIVE MONTH

SOME THINGS TO BUY

MACARONI AND CHEESE, VEGETABLE SOUP, CANNED VEGETABLES, TUNA, CANNED HAM OR CHICK-
EN, TOMATO SAUCE, SPAGETTI, RICE, DRIED BEANS.

THE BOX IS IN THE DONATION LOCATION BY THE PARISH HALL DOORS.

THANK-YOU



Bethel's Preschool News

We are off to a great school year with 62 children enrolled in our preschool! It is so good to see many children returning from last year and some new faces also. It

is a bit noisy (and that is a good thing!!) in our area now as children are busy learning, playing and growing!

Many, many thanks to all our volunteers who helped get our rooms ready for the school year. *Thanks to Randy and Betty Moerbe, Jeff Bellach, John Kappler, Amanda Eden, Leslie Janac, Judy Dunn and Ellan Barnes* for washing dress-ups.

Our *thanks to Amy and Grace Moravac* for sewing nap mat covers. Your help is very much appreciated!!

Thanks to both of our Pastors and Connie for greeting the children and the parents the first two days of school.

Just as a reminder, AmazonSmile Foundation has a program that will donate .5% of qualifying purchases to the non-profit organization of your choice. Our church

and preschool are eligible to receive those funds.

In order for the preschool to receive these funds, you must go to **smile.amazon.com** and log in as you normally would. It will ask you to designate an organization to receive the funds. When you go to choose the charitable organization, **please be sure it is Bethel Lutheran Church, Bryan, Texas** (as there are several other Bethel Lutheran Churches listed). You only have to designate our church one time. After that all of your Amazon Smile qualifying purchases will automatically be credited to our account. Anyone may designate a charity so please ask your friends and family members to consider designating our Church and preschool. ***This is a great way to donate to our preschool that costs you nothing!***

We ask for your continued prayers for the preschool staff, the children and their families. We ask for special prayers for good health and safety of the children as we all deal with COVID this year. Pray that this is a great year of learning and growing and that we show these families Jesus every day through the things we say and do. Praise be to God as He continues to bless this ministry!

Debbie Sadler

Caring for College Students

The Board of Witness and Outreach is preparing back to school care packages for college students of Bethel members and the University Lutheran Chapel (around 50 packages). If you would like to sponsor a care package the cost is \$25 per package.

Please make checks out to Bethel Lutheran Church with the Memo saying "College Care".

Funds given will be tax-deductible. *Disclaimer: By contributing to this project, donors acknowledge that the church has full authority to apply contributions designated for this project to other purposes in the event the project is canceled or oversubscribed.*



Happy Birthday!! August

Our Bethel Family

Amanda Eden 16
Austin LoBello 16
Mercy Delovio 18
Beverly Karstens 19
Kailee Shockey 21
Bryan Tomlin 22
Ruth Clark 23
Taryn Scholz 23

Jeremy Shilling 23
Caleb Drager 24
Robyn Forsyth 24
Levi Beyer 25
Kenneth Loke 25
John Moravec 25
Laura Loke 26
Kyle Sisco 26
Nick West 26
Matt Sadler 27

Brad Scott 27
Gladys Paholek 28
Xander Segrest 28
Sam Clark 29
Clay Jackson 31
Braxton Lindsey 31
Jason Palasota 31
Jaxton Zaneck 31

September

Julie Smith 1
Melanie Wigley 1
Caden Bellach 2
Paula Schehin 2
Kathy Burgess 3
Ruth Creason 3
Matt Hannes 3

Cole Hoffman 3
Jerrell Lueckemeyer 3
Cash Samford 3
Audrey Bissett 4
Carson Klose 4
Betty Schroeder 4
Joan Wuthrich 4

Cameron Beiseigel 6
Aurora Brown 6
Matt Montgomery 6
Lynn Stroud 6

Dear Bethel Members,

I received a thank you text from Linda Chandler, Director of Phoebe's Home. I took a \$500 donation from Bethel to her and also to Director of The Bridge.

The money was used to purchase backpacks and all school supplies the children need. She was most thankful for the faithful support of Bethel Lutheran, especially during 2020 when challenges are everywhere.

Donations to non-profits are down and she said they really appreciated the money and caring response from Bethel.

It has been my pleasure to serve as representative for Bethel to Twin City Mission since 1999 and so appreciate the support that is provided to this organization.

In Christ,

Rita Baumann



Dear Bethel Lutheran,

Thank you so much for your ongoing support of Breathe Life Ministries! We are sending you our vision document so you can see what God has put on our hearts at this time. (See the attached pdf to this email.) It has been a tough stretch on the church and her leaders recently (as it's been on all of us). The Lord has been at work preparing and positioning us to care for the needs highlighted by recent world events. Please pray that God would fill us with faith, supply every need, and make us bold and courageous in these days. We are praying the same for you. If you have questions or want to hear more about our retreat hub vision, please contact us. We'd love to hear from you!

Love Ya'll

Steve & Jamie Wiechman

Bethel's Church Council Minutes

If you would like a copy of any of the January—June Church Council Minutes Packet, they are available in the Church Office. Please let us know and we will have a copy waiting for you to pick up. Thank you.

THE LUTHERAN HOUR

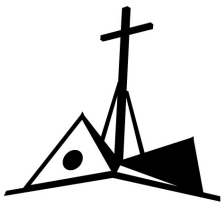
is on KAGC, 1510 AM on Sundays at 12:30 p.m. sponsored by Bethel. If you would like, you can sponsor a week's broadcast for \$25 or a month for \$100. Thank you to all who have given to this ministry.

The Lutheran Hour for the month of August is sponsored to the glory of God by Flo Schaffer in loving memory of Horace Schaffer and Thomas Schaffer.

The 2020 Flower Chart for Altar flowers is in the Information Center by the elevator. The cost is \$30 per sponsorship and we will accept 3 sponsors each Sunday.

There are more dates available to sponsor the altar flowers in September, October, November & December. You can email the church office at office@blcbcs.org or call 822-2742 if you have any questions. Thank you.





Bethel Lutheran Church

4221 Boonville Rd, Bryan, Texas 77802
Phone: (979) 822-2742 | FAX: (979) 822-4082
www.BLCbcs.org | office@BLCbcs.org
Preschool phone: 485-9835 or cell: 446-1578

Staff:

Rev. Randall Bard, Senior Pastor, (979) 422-0046

Rev. Tim Eden, Associate Pastor

Mr. Jeff Bellach, Director of Christian Education

Mrs. Debbie Sadler, Dir., Bethel Lutheran Preschool

Mrs. Kathy Herwald, Director of Operations

Rev. K. Lynn Stroud, Pastor Emeritus

Mr. Randall Moerbe, DCE Emeritus

Mrs. Ruthann Stroud, Church Secretary

Mrs. Connie Bard, Children's Ministry Coordinator

Mrs. Katie Bentley, Office Assistant

Mr. Jeremy Shilling, *His Praise* Band Leader

August 20—September 3, 2020



Church Office Hours

Mondays—Thursdays	9am - 5pm
Fridays	9am—3pm

Join us for

Saturdays Onsite — Worship at 5pm thru August

**Starting Saturday, Sept. 5th - Worship at 4pm
and Bible Class at 5pm**

Sunday Mornings

8:30 AM Onsite Divine Service (Traditional)
Also Live Streamed

10:00 AM All ONLINE videos
Children's Sunday School
Adult Bible Classes

Starting Sept. 6th— Onsite Sunday School & Bible Class

11:15 AM Onsite Divine Service (Contemporary)
Also Live Streamed

Go to www.blcbs.org for more information